



ECONOMIC INDICATORS

NEW SOUTH WALES

EMBARGO: 11:30AM (CANBERRA TIME) TUES 15 AUG 2000

C O N T E N T S

| | <i>Page</i> |
|---|-------------|
| Notes | 2 |
| NSW overview | 3 |
| Main features | 4 |
| List of tables and graphs | 5 |
| | |
| Population | 6 |
| Labour | 7 |
| Production | 10 |
| Building | 11 |
| Retail trade | 12 |
| New motor vehicle registrations | 13 |
| Tourism | 14 |
| Consumer and producer price indexes | 15 |
| Finance | 16 |
| State Government finance | 17 |
| Investment | 18 |
| International trade | 19 |

- For further information about these and related statistics, contact Jill Tomlinson on Sydney 02 9268 4123, or the National Information Service on 1300 135 070.

NOTES

FORTHCOMING ISSUES

| <i>ISSUE</i> | <i>ISSUE DATE</i> |
|----------------|-------------------|
| September 2000 | 15 September 2000 |
| October 2000 | 16 October 2000 |
| November 2000 | 15 November 2000 |
| December 2000 | 15 December 2000 |
| January 2001 | 15 January 2001 |
| February 2001 | 15 February 2001 |

GENERAL

This publication provides information on a wide range of economic indicators which are the latest available at the time of publication. In a number of cases, figures appearing in this summary are preliminary and are subject to revision in subsequent issues.

SEASONAL ADJUSTMENT AND TREND ESTIMATION

Seasonal adjustment is a means of removing the estimated effects of normal seasonal variation from a series so that the effects of other variations on that series can be more clearly recognised. Seasonal adjustment does not aim to remove the irregular or non-seasonal influences which may be present. This means that movements of seasonally adjusted estimates may not be reliable indicators of trend behaviour. Smoothing seasonally adjusted series produces a measure of the underlying trend by reducing the impact of the irregular component of the series. This smoothing technique does result in revisions to the most recent estimates as additional observations become available. For an explanation of seasonal adjustment derivation, refer to the publication *Seasonally Adjusted Indicators* (Cat. no. 1308.0).

STANDARD ERRORS OF ESTIMATES

One measure of the variability which occurs as a result of surveying only samples of the total business population is the standard error. There are about two chances in three that a survey estimate is within one standard error of the figure that would have been obtained if all businesses had been included, and about 19 chances in 20 that it is within two standard errors. The standard error can also be expressed as a percentage of the estimate and this is known as the relative standard error (RSE).

For detailed explanatory notes and definitions for the items shown in this publication, readers are referred to the specific ABS publications.

Current publications produced by the ABS are listed in the *Catalogue of Publications* (Cat. no. 1101.0). A *Release Advice* (Cat. no. 1105.0) is issued on Tuesdays and Fridays which lists publications to be released in the next few days. These publications are available from any ABS office.

SYMBOLS AND OTHER USAGES

| | |
|-------|---|
| kWh | kilowatt hour |
| teraJ | terajoule |
| n.a. | not available |
| n.p. | not available for publication but included in totals where applicable |
| n.y.a | not yet available |
| r | figure or series revised since previous issue |
| . . | not applicable |
| — | nil or rounded to zero |
| — | break in continuity of series (where a line is drawn across a column between two consecutive figures) |

Gregory W. Bray
Regional Director
New South Wales

NSW OVERVIEW

| | |
|---------------------------------|--|
| EMPLOYMENT | Employment in NSW decreased by 0.5% in June 2000 to a seasonally adjusted figure of 3,038,400. National employment in June 2000 was 9,042,000. |
| UNEMPLOYMENT | Unemployment in NSW increased by 1.5% to a seasonally adjusted figure of 187,900 in June 2000. The unemployment rate increased slightly to 5.8% in June 2000. The national unemployment rate was 6.6% in June 2000. |
| INDUSTRIAL DISPUTES | In NSW in April 2000 there were 20,000 working days lost due to industrial disputes, an increase of almost 71% on the 11,700 working days lost in the previous month. Nationally there were 40,900 working days lost due to industrial disputes in April 2000. |
| BUILDING APPROVALS | The seasonally adjusted number of new dwelling units approved for NSW in May 2000 increased 2.9% from the previous month to 3,807 dwelling units. Seasonally adjusted and trend estimates to April 2000 have been revised as a result of the annual reanalysis of the seasonal factors and the introduction of a new method for aggregation of series—see May 2000 issue of <i>Building Approvals, Australia</i> (Cat no. 8731.0). |
| RETAIL | In seasonally adjusted terms, total retail sales for NSW in May 2000 was \$4,216.0 million. For April 2000, the figure was \$4,182.3 million. |
| NEW MOTOR VEHICLE REGISTRATIONS | New motor vehicle registrations for NSW in seasonally adjusted terms in May 2000 decreased by 4.1% on the previous month to 20,100 registrations. |
| TOURISM | In NSW the room occupancy rate for the March quarter decreased by 0.3 percentage points to 60.3% compared with the previous March quarter. There was a decrease of 0.6 percentage points compared with the December quarter 1999. |
| FINANCE | The seasonally adjusted value of housing finance commitments for owner occupation in NSW in May 2000 was \$2,466 million, an increase of 2.5% on the previous month and an overall increase of 3.3% on May 1999. |
| IMPORTS AND EXPORTS | The customs value of imports into NSW during May 2000 was \$4,614 million, an increase of 32% on April 2000. The value of exports (FOB) from NSW in May 2000 was \$1,746 million, a rise of 8.4% over the same period. |

MAIN FEATURES

TOURISM

In NSW the number of room nights occupied in licensed hotels, motels and guest houses and serviced apartments with 15 or more rooms or units in the March quarter 2000 decreased by 1.0% on the December quarter 1999 to 3,388,100. Compared to the March quarter 1999 this was an increase of 5.4%. At the national level, the number of room nights occupied decreased by 3.1% compared with the December quarter 1999 while there was a 5.2% increase on the number of room nights occupied during the March quarter 1999. In NSW the room occupancy rate for licensed hotels, motels and guest houses and serviced apartments in the March quarter 2000 was 60.3%, a fall of 0.3 percentage points from the March quarter 1999.

In the Sydney Tourism region, room occupancy rate for the March quarter 2000 for accommodation establishments overall was 71.7%, a decrease of 0.8 percentage points over the year. For the March quarter 2000 room occupancy rates for licensed hotels fell by 0.7 percentage points compared with the corresponding quarter in 1999 to 74.2%. The occupancy rate for motels and guest houses increased by 1.7 percentage points to 68.7%, while for serviced apartments there was a decrease in occupancy rate of 7.6 percentage points to 66.9%.

In NSW takings from accommodation increased in aggregate for each accommodation type in the March quarter 2000 compared with the March quarter 1999 with an overall increase of 10.3% to \$397.9 million. In the Sydney Tourism Region, takings from accommodation were \$279.4 million for the March quarter 2000 accounting for over 70% of the total for NSW.

For the four quarters of 2000 the scope of the Survey of Tourist Accommodation has been expanded. Further details are published in *Tourist Accommodation, Australia* (Cat no. 8635.0) and *Tourist Accommodation, Small Area Data, NSW, March Quarter 2000* (Cat no. 8635.1.40.001).

FINANCE

The seasonally adjusted estimate for the value of housing finance commitments in NSW was \$2,466 million in May 2000, a rise of 2.5% from April 2000 and an overall increase of 3.3% since May 1999. Nationally, the seasonally adjusted value of lending commitments for housing finance rose by 4.9% to \$6,174 million in May 2000 and was 6.0% higher than in May 1999.

In original terms, total commitments in NSW in May 2000 rose by 11.6% to \$2,816 million, compared to May 1999. Over the same period, there were increases in all contributing indicators, with the exception of commitments for the construction of dwellings which fell by 7.1% to \$257 million. Commitments to purchase established dwellings increased 9.3% to \$1,953 million and commitments for the purchase of newly erected dwellings rose by 4.3% to \$100 million. Commitments for re-financing also rose, up 38.9% to \$506 million.

The average borrowing size in NSW in May 2000 was \$165,000, up 5.2% on the average of \$156,800 recorded for May 1999.

LIST OF TABLES AND GRAPHS

page

| | | |
|-------------------------------------|---|----|
| POPULATION | 1 Estimated resident population, NSW | 6 |
| LABOUR | 2 Labour data, latest time period, NSW and Australia | 7 |
| | 3 Labour data, time series, NSW | 7 |
| | 4 Labour force status of the civilian population, NSW | 8 |
| | 5 Graph: Unemployment rates, NSW and Australia | 9 |
| | 6 Coal, electricity and gas production, latest time period, NSW and Australia | 10 |
| PRODUCTION | 7 Coal, electricity and gas production, time series, NSW | 10 |
| BUILDING | 8 Building approvals, latest time period, NSW and Australia | 11 |
| | 9 Building approvals, time series, NSW | 11 |
| RETAIL TRADE | 10 Turnover of retail establishments, latest time period, NSW and Australia | 12 |
| | 11 Turnover of retail establishments, seasonally adjusted, time series, NSW | 12 |
| NEW MOTOR VEHICLE REGISTRATIONS | 12 New motor vehicle registrations, latest time period, NSW and Australia | 13 |
| | 13 New motor vehicle registrations, seasonally adjusted, time series, NSW | 13 |
| TOURISM | 14 Accommodation Establishments, latest time period, NSW and Australia | 14 |
| | 15 Accommodation Establishments, time series, Sydney and NSW | 14 |
| | 16 Graph: Hotels, motels etc., monthly room occupancy rates, Sydney Tourism Region and NSW | 14 |
| CONSUMER AND PRODUCER PRICE INDEXES | 17 Consumer and producer price indexes, latest time period, NSW and Australia | 15 |
| | 18 Consumer and producer price indexes, time series, NSW | 15 |
| | 19 Graph: Consumer Price Index, Sydney and average of 8 capital cities | 15 |
| FINANCE | 20 Finance commitments, latest time period, NSW and Australia | 16 |
| | 21 Finance commitments, time series, NSW | 16 |
| STATE GOVERNMENT FINANCE | 22 Government finance, budget sector, time series, NSW | 17 |
| INVESTMENT | 23 Actual private new fixed capital expenditure, latest time period, NSW and Australia | 18 |
| | 24 Actual private new fixed capital expenditure, time series, NSW | 18 |
| | 25 Graph: Actual private new fixed capital expenditure by type of asset, trend estimate, NSW | 18 |
| INTERNATIONAL TRADE | 26 Imports and exports, latest time period, NSW and Australia | 19 |
| | 27 Imports and exports, time series, NSW | 19 |

1 ESTIMATED RESIDENT POPULATION—NSW

| | Estimated resident population at end of period | | | Increase during period | | | Mean estimated resident population for year ended | |
|---------------|---|---------|---------|------------------------|-------------------------------|----------------------|--|-------------|
| | Males | Females | Persons | Natural increase(a) | Net estimated migration | Total increase(b) | 30 June | 31 December |
| | '000 | '000 | '000 | '000 | '000 | '000 | '000 | '000 |
| 1997 | 3 128.9 | 3 171.5 | 6 300.5 | 40.9 | 17.6 | 58.5 | 6 240.9 | 6 276.1 |
| 1998 | 3 168.3 | 3 207.8 | 6 376.2 | 40.5 | 35.2 | 75.7 | 6 307.1 | 6 344.3 |
| 1999 | 3 207.5 | 3 244.2 | 6 451.7 | 40.3 | 35.2 | 75.5 | 6 375.5 | 6 412.9 |
| 1998 | | | | | | | | |
| September qtr | 3 157.3 | 3 197.6 | 6 354.9 | 8.2 | 13.2 | 21.4 | .. | .. |
| December qtr | 3 168.3 | 3 207.8 | 6 376.2 | 12.1 | 9.1 | 21.2 | .. | .. |
| 1999 | | | | | | | | |
| March qtr | 3 179.0 | 3 218.2 | 6 397.2 | 9.1 | 11.9 | 21.0 | .. | .. |
| June qtr | 3 186.9 | 3 224.8 | 6 411.7 | 9.7 | 4.8 | 14.5 | .. | .. |
| September qtr | 3 195.9 | 3 232.8 | 6 428.7 | 8.1 | 8.9 | 17.0 | .. | .. |
| December qtr | 3 207.5 | 3 244.2 | 6 451.7 | 13.4 | 9.5 | 22.9 | .. | .. |

(a) Excess of live births over deaths.

(b) For dates prior to June 1996, differences between the total increase shown and the sum of the natural increase and net estimated migration arise from retrospective adjustments to population estimates (which are made after each Census) to compensate for any intercensal discrepancy. A description of intercensal discrepancy is contained in the ABS *Information Paper: Demographic Estimates—Concepts, Sources and Methods* (Cat. no. 3228.0).

Source: Australian Demographic Statistics (Cat. no. 3101.0).

2 LABOUR—NSW AND AUSTRALIA

| | New South Wales | | | | | | Australia | |
|---|-----------------|---------------|---------------|--------------------------|------------------------------------|---------------|--------------------------|------------------------------------|
| | Unit | Latest period | Latest figure | Change from prior period | Change from same period prior year | Latest figure | Change from prior period | Change from same period prior year |
| | | | | % | % | | % | % |
| Employed persons (seasonally adjusted) | '000 | June 2000 | 3 038.4 | -0.5 | 3.8 | 9 042.0 | 0.2 | 3.0 |
| Unemployed persons (seasonally adjusted) | '000 | June 2000 | 187.9 | 1.5 | -6.8 | 643.0 | -1.4 | -1.4 |
| Labour force (seasonally adjusted) | '000 | June 2000 | 3 226.3 | -0.4 | 3.1 | 9 685.1 | 0.1 | 2.4 |
| Participation rate (seasonally adjusted) | % | June 2000 | 62.7 | -0.5 | 1.6 | 63.7 | — | 1.0 |
| Unemployment rate (seasonally adjusted) | % | June 2000 | 5.8 | 1.8 | -9.4 | 6.6 | -1.5 | -8.3 |
| Industrial disputes—working days lost | '000 | Apr 2000 | 20.0 | 70.9 | 852.4 | 40.9 | -27.5 | 45.0 |
| Job vacancies | '000 | May 2000 | 41.8 | -9.8 | 11.7 | 106.8 | -5.2 | 20.2 |
| Average weekly employee earnings—full-time adult ordinary time earnings (seasonally adjusted) | \$ | Feb 2000 | 811.6 | 0.8 | 3.6 | 773.9 | 1.4 | 4.1 |

Source: Average Weekly Earnings, States and Australia (Cat. no. 6302.0); Industrial Disputes, Australia (Cat. no. 6321.0); Job Vacancies, Australia (Cat. no. 6354.0); Labour Force, Australia, Preliminary (Cat. no. 6202.0).

3 LABOUR—NSW

| | Seasonally adjusted | | | | | | |
|-------------|---------------------|--------------------|--------------|--------------------|-------------------|---|---------------|
| | Employed persons | Unemployed persons | Labour force | Participation rate | Unemployment rate | Industrial disputes (working days lost) | Job vacancies |
| | '000 | '000 | '000 | % | % | '000 | '000 |
| 1999 | | | | | | | |
| April | 2 903.2 | 212.7 | 3 115.9 | 61.6 | 6.8 | 2.1 | .. |
| May | 2 920.5 | 203.8 | 3 124.3 | 61.7 | 6.5 | 3.1 | 37.5 |
| June | 2 926.9 | 201.6 | 3 128.5 | 61.7 | 6.4 | 3.9 | .. |
| July | 2 938.2 | 192.1 | 3 130.3 | 61.6 | 6.1 | 23.4 | .. |
| August | 2 936.1 | 208.2 | 3 144.3 | 61.8 | 6.6 | 32.2 | 48.3 |
| September | 2 948.9 | 217.8 | 3 166.7 | 62.2 | 6.9 | 33.8 | .. |
| October | 2 967.0 | 190.0 | 3 157.0 | 61.9 | 6.0 | 16.7 | .. |
| November | 2 960.5 | 176.9 | 3 137.4 | 61.5 | 5.6 | 121.4 | 36.9 |
| December | 2 971.5 | 199.9 | 3 171.4 | 62.0 | 6.3 | 29.1 | .. |
| 2000 | | | | | | | |
| January | 2 974.0 | 189.5 | 3 163.5 | 61.8 | 6.0 | 7.5 | .. |
| February | 3 004.5 | 186.4 | 3 190.9 | 62.3 | 5.8 | 20.1 | 46.4 |
| March | 3 013.9 | 193.3 | 3 207.2 | 62.5 | 6.0 | 11.7 | .. |
| April | 3 038.2 | 181.8 | 3 220.0 | 62.7 | 5.6 | 20.0 | .. |
| May | 3 053.4 | 185.1 | 3 238.5 | 63.0 | 5.7 | n.y.a. | 41.8 |
| June | 3 038.4 | 187.9 | 3 226.3 | 62.7 | 5.8 | n.y.a. | .. |

Source: Industrial Disputes, Australia (Cat. no. 6321.0); Job Vacancies, Australia (Cat. no. 6354.0); Labour Force, Australia, Preliminary (Cat. no. 6202.0).

4 LABOUR FORCE STATUS, NSW—ORIGINAL

| | <u>Employed</u> | | <u>Unemployed</u> | | Labour force | Not in labour force | Civilian population aged 15 years and over | Unemployment rate(a) | Participation rate(b) |
|-------------|-------------------|---------|-------------------|-------|--------------|---------------------|--|----------------------|-----------------------|
| | Full-time workers | Total | Looking for | | | | | | |
| | | | full-time work | Total | | | | | |
| '000 | '000 | '000 | '000 | '000 | '000 | '000 | % | % | |
| MALES | | | | | | | | | |
| June | | | | | | | | | |
| 1996 | 1 403.8 | 1 588.0 | 118.8 | 137.9 | 1 725.9 | 664.7 | 2 390.6 | 8.0 | 72.2 |
| 1997 | 1 416.5 | 1 599.0 | 115.5 | 127.8 | 1 726.8 | 696.6 | 2 423.4 | 7.4 | 71.3 |
| 1998 | 1 444.7 | 1 626.2 | 116.7 | 133.8 | 1 760.0 | 697.0 | 2 457.0 | 7.6 | 71.6 |
| 1999 | | | | | | | | | |
| April | 1 456.1 | 1 657.8 | 95.6 | 115.5 | 1 773.3 | 713.3 | 2 486.6 | 6.5 | 71.3 |
| May | 1 460.0 | 1 662.7 | 93.3 | 110.1 | 1 772.8 | 717.2 | 2 490.0 | 6.2 | 71.2 |
| June | 1 459.4 | 1 668.1 | 91.6 | 108.0 | 1 776.1 | 717.3 | 2 493.4 | 6.1 | 71.2 |
| July | 1 491.8 | 1 687.4 | 83.2 | 101.3 | 1 788.7 | 707.7 | 2 496.4 | 5.7 | 71.7 |
| August | 1 464.1 | 1 662.6 | 95.9 | 115.3 | 1 777.8 | 721.6 | 2 499.4 | 6.5 | 71.1 |
| September | 1 502.7 | 1 696.2 | 97.6 | 124.8 | 1 820.9 | 681.5 | 2 502.4 | 6.9 | 72.8 |
| October | 1 504.7 | 1 688.4 | 87.4 | 105.5 | 1 793.9 | 712.6 | 2 506.4 | 5.9 | 71.6 |
| November | 1 498.9 | 1 681.8 | 81.4 | 95.1 | 1 777.0 | 733.5 | 2 510.5 | 5.4 | 70.8 |
| December | 1 530.2 | 1 711.0 | 95.2 | 116.1 | 1 827.0 | 687.5 | 2 514.5 | 6.4 | 72.7 |
| 2000 | | | | | | | | | |
| January | 1 497.6 | 1 680.2 | 104.8 | 119.9 | 1 800.1 | 717.6 | 2 517.7 | 6.7 | 71.5 |
| February | 1 503.6 | 1 694.0 | 95.8 | 113.8 | 1 807.8 | 713.1 | 2 520.9 | 6.3 | 71.7 |
| March | 1 494.2 | 1 701.8 | 93.5 | 114.1 | 1 815.9 | 708.2 | 2 524.0 | 6.3 | 71.9 |
| April | 1 504.7 | 1 716.6 | 81.8 | 100.5 | 1 817.1 | 710.5 | 2 527.6 | 5.5 | 71.9 |
| May | 1 504.2 | 1 719.5 | 79.7 | 98.2 | 1 817.7 | 713.5 | 2 531.1 | 5.4 | 71.8 |
| June | 1 517.3 | 1 718.7 | 86.3 | 100.5 | 1 819.2 | 715.5 | 2 534.7 | 5.5 | 71.8 |
| FEMALES | | | | | | | | | |
| June | | | | | | | | | |
| 1996 | 714.2 | 1 210.8 | 55.0 | 86.5 | 1 297.4 | 1 184.0 | 2 481.4 | 6.7 | 52.3 |
| 1997 | 706.6 | 1 194.6 | 63.3 | 91.3 | 1 285.9 | 1 228.7 | 2 514.6 | 7.1 | 51.1 |
| 1998 | 730.2 | 1 245.8 | 57.1 | 88.3 | 1 334.1 | 1 211.8 | 2 545.9 | 6.6 | 52.4 |
| 1999 | | | | | | | | | |
| April | 726.0 | 1 242.6 | 62.5 | 98.5 | 1 341.2 | 1 232.0 | 2 573.2 | 7.3 | 52.1 |
| May | 729.5 | 1 250.2 | 56.8 | 90.0 | 1 340.3 | 1 235.9 | 2 576.1 | 6.7 | 52.0 |
| June | 746.9 | 1 264.6 | 52.3 | 81.5 | 1 346.2 | 1 232.9 | 2 579.1 | 6.1 | 52.2 |
| July | 754.9 | 1 265.7 | 53.2 | 76.5 | 1 342.2 | 1 239.8 | 2 582.0 | 5.7 | 52.0 |
| August | 723.4 | 1 237.1 | 54.9 | 86.7 | 1 323.8 | 1 261.2 | 2 584.9 | 6.5 | 51.2 |
| September | 749.9 | 1 285.6 | 61.3 | 97.6 | 1 383.2 | 1 204.7 | 2 587.9 | 7.1 | 53.4 |
| October | 767.2 | 1 289.1 | 51.3 | 77.1 | 1 366.2 | 1 225.1 | 2 591.3 | 5.6 | 52.7 |
| November | 756.5 | 1 283.3 | 50.5 | 71.8 | 1 355.1 | 1 239.7 | 2 594.8 | 5.3 | 52.2 |
| December | 788.4 | 1 307.0 | 54.7 | 80.9 | 1 387.9 | 1 210.4 | 2 598.3 | 5.8 | 53.4 |
| 2000 | | | | | | | | | |
| January | 776.9 | 1 257.2 | 55.3 | 80.7 | 1 337.9 | 1 262.8 | 2 600.7 | 6.0 | 51.4 |
| February | 755.7 | 1 282.3 | 57.0 | 98.2 | 1 380.5 | 1 222.7 | 2 603.2 | 7.1 | 53.0 |
| March | 771.1 | 1 307.8 | 57.0 | 92.4 | 1 400.2 | 1 205.4 | 2 605.6 | 6.6 | 53.7 |
| April | 791.3 | 1 318.7 | 52.1 | 82.4 | 1 401.1 | 1 207.3 | 2 608.4 | 5.9 | 53.7 |
| May | 784.9 | 1 324.9 | 53.2 | 83.7 | 1 408.7 | 1 202.5 | 2 611.2 | 5.9 | 53.9 |
| June | 783.4 | 1 326.0 | 39.8 | 76.1 | 1 402.2 | 1 211.8 | 2 614.0 | 5.4 | 53.6 |

(a) For footnotes see end of table.

4 LABOUR FORCE STATUS, NSW—ORIGINAL—continued

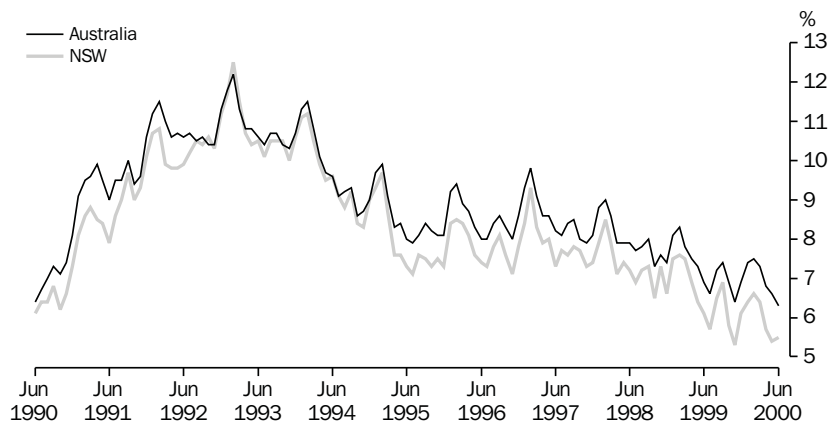
| | <u>Employed</u> | | <u>Unemployed</u> | | <u>Labour force</u> | <u>Not in labour force</u> | <u>Civilian population aged 15 years and over</u> | <u>Unemployment rate(a)</u> | <u>Participation rate(b)</u> |
|-------------|--------------------------|--------------|-----------------------------------|--------------|---------------------|----------------------------|---|-----------------------------|------------------------------|
| | <u>Full-time workers</u> | <u>Total</u> | <u>Looking for full-time work</u> | <u>Total</u> | | | | | |
| | '000 | '000 | '000 | '000 | | | | | |
| PERSONS | | | | | | | | | |
| June | | | | | | | | | |
| 1996 | 2 118.0 | 2 798.8 | 173.8 | 224.5 | 3 023.3 | 1 848.7 | 4 872.0 | 7.4 | 62.1 |
| 1997 | 2 123.1 | 2 793.6 | 178.8 | 219.0 | 3 012.6 | 1 925.3 | 4 937.9 | 7.3 | 61.0 |
| 1998 | 2 174.8 | 2 872.0 | 173.8 | 222.1 | 3 094.1 | 1 908.8 | 5 002.9 | 7.2 | 61.8 |
| 1999 | | | | | | | | | |
| April | 2 182.1 | 2 900.4 | 158.1 | 214.0 | 3 114.5 | 1 945.3 | 5 059.8 | 6.9 | 61.6 |
| May | 2 189.6 | 2 912.9 | 150.2 | 200.1 | 3 113.1 | 1 953.1 | 5 066.1 | 6.4 | 61.4 |
| June | 2 206.3 | 2 932.7 | 143.9 | 189.6 | 3 122.3 | 1 950.3 | 5 072.5 | 6.1 | 61.6 |
| July | 2 246.7 | 2 953.2 | 136.4 | 177.8 | 3 131.0 | 1 947.5 | 5 078.5 | 5.7 | 61.7 |
| August | 2 187.6 | 2 899.6 | 150.8 | 202.0 | 3 101.6 | 1 982.8 | 5 084.4 | 6.5 | 61.0 |
| September | 2 252.6 | 2 981.8 | 158.9 | 222.4 | 3 204.2 | 1 886.2 | 5 090.3 | 6.9 | 62.9 |
| October | 2 271.8 | 2 977.5 | 138.6 | 182.6 | 3 160.1 | 1 937.7 | 5 097.8 | 5.8 | 62.0 |
| November | 2 255.4 | 2 965.1 | 131.9 | 167.0 | 3 132.1 | 1 973.2 | 5 105.3 | 5.3 | 61.3 |
| December | 2 318.6 | 3 017.9 | 149.9 | 197.0 | 3 214.9 | 1 897.9 | 5 112.8 | 6.1 | 62.9 |
| 2000 | | | | | | | | | |
| January | 2 274.5 | 2 937.4 | 160.1 | 200.6 | 3 138.0 | 1 980.4 | 5 118.4 | 6.4 | 61.3 |
| February | 2 259.3 | 2 976.3 | 152.8 | 212.0 | 3 188.3 | 1 935.7 | 5 124.0 | 6.6 | 62.2 |
| March | 2 265.4 | 3 009.6 | 150.4 | 206.5 | 3 216.1 | 1 913.6 | 5 129.7 | 6.4 | 62.7 |
| April | 2 296.0 | 3 035.3 | 133.9 | 182.9 | 3 218.2 | 1 917.8 | 5 136.0 | 5.7 | 62.7 |
| May | 2 289.1 | 3 044.4 | 132.8 | 181.9 | 3 226.3 | 1 916.0 | 5 142.3 | 5.6 | 62.7 |
| June | 2 300.6 | 3 044.7 | 126.0 | 176.6 | 3 221.3 | 1 927.3 | 5 148.6 | 5.5 | 62.6 |

(a) The number of unemployed in each group expressed as a percentage of the labour force in the same group.

(b) The labour force in each group expressed as a percentage of the civilian population aged 15 years and over in the same group.

Source: Labour Force, Australia, Preliminary (Cat. no. 6202.0).

5 UNEMPLOYMENT RATE—ORIGINAL



Source: Labour Force, Australia, Preliminary (Cat. no. 6202.0).

6 COAL, ELECTRICITY AND GAS PRODUCTION, NSW AND AUSTRALIA—ORIGINAL

| | Unit | Latest period | New South Wales | | | | Australia | | |
|--------------|-------------|---------------|-----------------|-------------------|-----------------------------|---------------|-------------------|-----------------------------|--|
| | | | Latest figure | Change | Change | Latest figure | Change | Change | |
| | | | | from prior period | from same period prior year | | from prior period | from same period prior year | |
| | | | % | % | | % | % | | |
| Raw coal won | | | | | | | | | |
| Underground | '000 tonnes | Apr 2000 | 3 792 | -23.4 | 7.6 | 7 805 | -6.4 | 47.3 | |
| Open cut | '000 tonnes | Apr 2000 | 5 051 | -24.5 | -12.4 | 13 630 | -24.2 | -20.3 | |
| Total | '000 tonnes | Apr 2000 | 8 843 | -24.0 | -4.8 | 21 435 | -18.5 | -4.3 | |
| Electricity | mill. kWh | Mar qtr 2000 | 16 339 | 6.9 | 4.7 | 46 040 | 3.2 | 2.1 | |
| Gas(a) | teraJ | Mar qtr 2000 | n.p. | n.p. | n.p. | 152 773 | -3.6 | 5.4 | |

(a) Available for issue through mains. Includes ACT.

Source: Joint Coal Board for NSW and Australia from ABS unpublished statistics, Manufacturing Production, Australia (Cat. no. 8301.0).

7 COAL, ELECTRICITY AND GAS PRODUCTION, NSW—ORIGINAL

| | Raw coal won | | | | | Electricity | Gas(a) |
|----------------|--------------|-------------|-------------|-------------|---------|-------------|--------|
| | Underground | Open cut | Total | Electricity | Gas(a) | | |
| | '000 tonnes | '000 tonnes | '000 tonnes | | | | |
| 1996-97 | 54 642 | 69 036 | 123 678 | 62 788 | 109 284 | | |
| 1997-98 | 58 299 | 75 710 | 134 009 | 61 804 | 111 665 | | |
| 1998-99 | 51 158 | 80 209 | 131 367 | 63 743 | 110 092 | | |
| 1999 | | | | | | | |
| January | 3 273 | 6 159 | 9 432 | 15 609 | 22 367 | | |
| February | 3 848 | 6 913 | 10 761 | | | | |
| March | 4 921 | 7 827 | 12 748 | | | | |
| April | 3 525 | 5 768 | 9 293 | 16 365 | 30 428 | | |
| May | 4 664 | 6 303 | 10 967 | | | | |
| June | 5 209 | 7 448 | 12 657 | | | | |
| July | 4 137 | 6 270 | 10 407 | 16 977 | 32 555 | | |
| August | 3 820 | 6 306 | 10 126 | | | | |
| September | 5 552 | 8 215 | 13 767 | | | | |
| October | 4 045 | 6 084 | 10 129 | 15 284 | 26 029 | | |
| November | 4 340 | 6 213 | 10 553 | | | | |
| December | 4 662 | 7 066 | 11 728 | | | | |
| 2000 | | | | | | | |
| January | 3 562 | 5 688 | 9 250 | 16 339 | n.p. | | |
| February | 3 878 | 6 362 | 10 240 | | | | |
| March | r 4 951 | r 6 688 | r 11 639 | | | | |
| April | 3 792 | 5 051 | 8 843 | n.a. | n.a. | | |

(a) Available for issue through mains. Includes ACT.

Source: Joint Coal Board, Manufacturing Production, Australia (Cat. no. 8301.0).

8 BUILDING APPROVALS—NSW AND AUSTRALIA

| | Unit | Latest period | Latest figure | New South Wales | | Australia | | |
|---|------|---------------|---------------|----------------------------|--------------------------------------|---------------|----------------------------|--------------------------------------|
| | | | | Change from prior period % | Change from same period prior year % | Latest figure | Change from prior period % | Change from same period prior year % |
| Number of dwelling units(a) (seasonally adjusted(b)) | | | | | | | | |
| New houses | no. | May 2000 | 2 024 | -8.3 | -21.9 | 8 194 | -12.5 | -13.5 |
| Total | no. | May 2000 | 3 807 | 2.9 | -17.3 | 12 594 | -5.2 | -4.7 |
| Value of new residential building (seasonally adjusted) | \$m | May 2000 | 515.0 | 7.5 | -4.7 | 1 588.0 | -4.4 | 5.8 |
| Value of alterations and additions to residential building(c) (seasonally adjusted) | \$m | May 2000 | 118.5 | 1.5 | 10.4 | 311.0 | 3.8 | 26.8 |
| Value of non-residential building(d) (original) | \$m | May 2000 | 298.3 | -21.6 | -29.8 | 1 059.7 | 5.5 | 2.4 |
| Value of all building (original) | \$m | May 2000 | 1 056.4 | 17.1 | -7.9 | 3 239.7 | 11.8 | 17.4 |

(a) Includes dwelling units approved as part of the construction of non-residential building and alterations and additions to existing buildings (including conversions to dwelling units).

(b) Seasonally adjusted and trend estimates to April 2000 have been revised. See Building Approvals, Australia (Cat. no. 8731.0).

(c) Valued at \$10,000 or more. Includes conversions of existing buildings into residential buildings.

(d) Valued at \$50,000 or more.

Source: Building Approvals, Australia (Cat. no. 8731.0).

9 BUILDING APPROVALS—NSW

| | Number of dwelling units(a), seasonally adjusted(b) | | | | Value of building approvals | | | |
|----------------|---|---------|----------------|---------|---|-----------------------------|--------------|-----------|
| | New houses | | Total | | Seasonally adjusted | | Original | |
| | Private sector | Total | Private sector | Total | Alterations and additions to residential building | Non-residential building(d) | All building | |
| | no. | no. | no. | no. | \$m | \$m | \$m | \$m |
| 1996-97 | .. | .. | .. | .. | .. | .. | 5 169.2 | 11 356.6 |
| 1997-98 | .. | .. | .. | .. | .. | .. | 5 910.9 | 13 348.6 |
| 1998-99 | .. | .. | .. | .. | .. | .. | 4 543.4 | 11 932.3 |
| 1999 | | | | | | | | |
| March | r 2 501 | r 2 518 | r 4 267 | r 4 417 | r 518.4 | r 92.9 | 396.7 | 1 021.3 |
| April | r 2 257 | r 2 267 | r 4 433 | r 4 498 | r 530.6 | r 96.1 | 207.5 | 784.7 |
| May | r 2 566 | r 2 592 | r 4 494 | r 4 604 | r 540.5 | r 107.3 | 424.7 | 1 147.3 |
| June | r 2 518 | r 2 533 | r 4 244 | r 4 382 | r 585.9 | r 91.7 | 503.7 | 1 173.7 |
| July | r 2 685 | r 2 698 | r 4 199 | r 4 356 | r 600.6 | r 108.7 | 523.6 | 1 266.7 |
| August | r 2 596 | r 2 599 | r 4 595 | r 4 649 | r 625.5 | r 114.4 | 509.0 | 1 280.6 |
| September | r 2 308 | r 2 342 | r 4 405 | r 4 450 | r 536.9 | r 111.3 | 260.3 | 932.8 |
| October | r 2 708 | r 2 733 | r 4 464 | r 4 605 | r 568.8 | r 115.9 | 266.0 | 896.7 |
| November | r 2 754 | r 2 773 | r 4 118 | r 4 191 | r 513.9 | r 104.3 | 264.1 | 978.6 |
| December | r 2 947 | r 2 964 | r 4 376 | r 4 422 | r 561.1 | r 113.7 | 278.1 | 946.8 |
| 2000 | | | | | | | | |
| January | r 2 673 | r 2 687 | r 4 140 | r 4 233 | r 606.3 | r 91.7 | 359.2 | 935.3 |
| February | r 2 791 | r 2 807 | r 4 161 | r 4 275 | r 555.0 | r 121.8 | 279.5 | 934.9 |
| March | r 2 549 | r 2 559 | r 4 088 | r 4 117 | r 511.1 | r 119.4 | r 443.8 | r 1 072.5 |
| April | r 2 186 | r 2 206 | r 3 561 | r 3 701 | r 479.2 | r 116.7 | 380.7 | r 901.9 |
| May | 2 006 | 2 024 | 3 722 | 3 807 | 515.0 | 118.5 | 298.3 | 1 056.4 |

(a) Includes dwelling units approved as part of the construction of non-residential building and alterations and additions to existing buildings (including conversions to dwelling units).

(b) Seasonally adjusted and trend estimates to April 2000 have been revised. See Building Approvals, Australia (Cat. no. 8731.0).

(c) Valued at \$10,000 or more. Includes conversions of existing buildings into residential buildings.

(d) Valued at \$50,000 or more.

Source: Building Approvals, Australia (Cat. no. 8731.0).

10 TURNOVER OF RETAIL ESTABLISHMENTS(a), NSW AND AUSTRALIA—SEASONALLY ADJUSTED

| | Latest period | New South Wales | | | Australia | | |
|------------------------------------|-----------------|-----------------|--------------------------|------------------------------------|-----------------|--------------------------|------------------------------------|
| | | Latest figure | Change from prior period | Change from same period prior year | Latest figure | Change from prior period | Change from same period prior year |
| | | \$m | % | % | \$m | % | % |
| Food retailing | May 2000 | 1 543.5 | -0.9 | 0.1 | 4 861.2 | -1.0 | 1.6 |
| Department stores | May 2000 | 382.3 | 1.6 | 7.8 | 1 088.2 | -0.5 | 5.2 |
| Clothing and soft good retailing | May 2000 | 307.8 | 1.9 | 1.7 | 833.2 | 3.5 | 2.6 |
| Household good retailing | May 2000 | 461.8 | 3.7 | 17.3 | 1 460.2 | 2.6 | 10.5 |
| Recreational good retailing | May 2000 | 209.7 | 2.1 | 16.2 | 607.1 | 0.8 | 2.0 |
| Other retailing | May 2000 | 440.2 | 2.9 | 3.7 | 1 311.3 | 0.9 | 5.5 |
| Hospitality and services | May 2000 | 870.6 | 0.3 | -2.8 | 2 053.7 | 0.2 | 0.1 |
| Total value of retail sales | May 2000 | 4 216.0 | 0.8 | 3.0 | 12 214.8 | 0.2 | 3.1 |

(a) The figures shown are derived from a monthly survey of retail establishments. Excludes motor vehicle, boat and caravan dealers, service stations, smash repairers, tyre and battery retailers, bread and milk vendors, footwear repairers and electrical appliance repairers n.e.c. Retail establishments which do not have employees are excluded from the survey. Turnover includes retail sales, wholesale sales, takings from repairs, meals and hiring of goods; and commissions from agency activity (e.g. commissions received from collecting dry cleaning, selling lottery tickets etc.).

Source: Retail Trade, Australia (Cat. no. 8501.0).

11 TURNOVER OF RETAIL ESTABLISHMENTS(a), NSW—SEASONALLY ADJUSTED

| | Food retailing | Department stores | Clothing and soft good retailing | Household good retailing | Recreational good retailing | Other retailing | Hospitality and services | Total |
|-------------|----------------|-------------------|----------------------------------|--------------------------|-----------------------------|-----------------|--------------------------|---------|
| | \$m | \$m | \$m | \$m | \$m | \$m | \$m | \$m |
| 1999 | | | | | | | | |
| March | 1 583.4 | 365.0 | 310.1 | 379.5 | 195.0 | 385.1 | 889.1 | 4 107.2 |
| April | 1 540.6 | 359.8 | 323.3 | 389.0 | 195.8 | 417.4 | 889.8 | 4 115.6 |
| May | 1 542.1 | 354.6 | 302.6 | 393.6 | 180.5 | 424.3 | 895.7 | 4 093.4 |
| June | 1 564.8 | 345.4 | 307.6 | 395.9 | 190.1 | 408.4 | 884.6 | 4 096.8 |
| July | 1 557.7 | 360.6 | 305.2 | 402.9 | 199.8 | 413.5 | 857.3 | 4 097.1 |
| August | 1 593.7 | 373.5 | 321.7 | 430.1 | 195.5 | 427.2 | 843.3 | 4 184.9 |
| September | 1 594.3 | 362.5 | 319.4 | 449.7 | 193.3 | 427.9 | 870.5 | 4 217.5 |
| October | 1 587.7 | 378.8 | 323.6 | 458.2 | 190.0 | 424.7 | 851.0 | 4 214.0 |
| November | 1 588.9 | 374.1 | 327.6 | 440.9 | 185.6 | 435.1 | 845.2 | 4 197.5 |
| December | 1 605.9 | 372.1 | 322.4 | 421.4 | 184.1 | 443.1 | 856.4 | 4 205.4 |
| 2000 | | | | | | | | |
| January | 1 541.9 | 374.7 | 315.7 | 439.8 | 196.7 | 421.8 | 855.5 | 4 146.1 |
| February | 1 548.6 | 378.8 | 292.4 | 457.3 | 196.3 | 430.7 | 861.3 | 4 165.5 |
| March | 1 545.3 | 371.1 | 321.7 | 450.0 | 198.7 | 426.4 | 865.2 | 4 178.5 |
| April | 1 557.7 | 376.2 | 302.1 | 445.2 | 205.3 | 427.7 | 868.1 | 4 182.3 |
| May | 1 543.5 | 382.3 | 307.8 | 461.8 | 209.7 | 440.2 | 870.6 | 4 216.0 |

(a) The figures shown are derived from a monthly survey of retail establishments. Excludes motor vehicle, boat and caravan dealers, service stations, smash repairers, tyre and battery retailers, bread and milk vendors, footwear repairers and electrical appliance repairers n.e.c. Retail establishments which do not have employees are excluded from the survey. Turnover includes retail sales, wholesale sales, takings from repairs, meals and hiring of goods; and commissions from agency activity (e.g. commissions received from collecting dry cleaning, selling lottery tickets etc.).

Source: Retail Trade, Australia (Cat. no. 8501.0).

12 NEW MOTOR VEHICLE REGISTRATIONS(a), NSW AND AUSTRALIA—SEASONALLY ADJUSTED

| | Latest period | New South Wales | | | Australia | | |
|--|---------------|-----------------|--------------------------|------------------------------------|---------------|--------------------------|------------------------------------|
| | | Latest figure | Change from prior period | Change from same period prior year | Latest figure | Change from prior period | Change from same period prior year |
| | | no. | % | % | no. | % | % |
| Passenger vehicles | May 2000 | 16 439 | -6.2 | -12.8 | 48 061 | -3.3 | -9.9 |
| Other vehicles (excluding motor cycles) | May 2000 | 3 661 | 6.1 | 15.0 | 10 928 | 9.3 | 9.8 |
| Total registrations (excluding motor cycles) | May 2000 | 20 100 | -4.1 | -8.8 | 58 989 | -1.2 | -6.8 |

(a) Includes vehicles (other than those of the defence forces) owned by Government departments and authorities. Excludes mobile plant and equipment, tractors, trailers and non-motorised caravans.

Source: *New Motor Vehicle Registrations, Australia, Preliminary (Cat. no. 9301.0)*.

13 NEW MOTOR VEHICLE REGISTRATIONS(a), NSW—SEASONALLY ADJUSTED

| | Passenger vehicles | Other vehicles (excluding motor cycles) | Total (excluding motor cycles) |
|-------------|--------------------|---|--------------------------------|
| | no. | no. | no. |
| 1999 | | | |
| March | 19 292 | 3 574 | 22 865 |
| April | 19 504 | 3 372 | 22 876 |
| May | 18 845 | 3 184 | 22 029 |
| June | 19 442 | 3 363 | 22 805 |
| July | 19 633 | 3 748 | 23 381 |
| August | 17 713 | 3 449 | 21 162 |
| September | 18 022 | 3 553 | 21 574 |
| October | 17 819 | 3 802 | 21 621 |
| November | 18 426 | 3 942 | 22 368 |
| December | 19 679 | 4 395 | 24 074 |
| 2000 | | | |
| January | 17 675 | 3 672 | 21 347 |
| February | 18 376 | 3 977 | 22 352 |
| March | 18 314 | 3 530 | 21 844 |
| April | 17 517 | 3 451 | 20 968 |
| May | 16 439 | 3 661 | 20 100 |

(a) Includes vehicles (other than those of the defence forces) owned by Government departments and authorities. Excludes mobile plant and equipment, tractors, trailers and non-motorised caravans.

Source: *New Motor Vehicle Registrations, Australia, Preliminary (Cat. no. 9301.0)*.

14 ACCOMMODATION ESTABLISHMENTS(a) NSW AND AUSTRALIA—ORIGINAL

| | Unit | Latest period | New South Wales | | | Australia | | |
|---------------------|--------|---------------|-----------------|--------------------------|------------------------------------|---------------|--------------------------|------------------------------------|
| | | | Latest figure | Change from prior period | Change from same period prior year | Latest figure | Change from prior period | Change from same period prior year |
| | | | | % | % | | % | % |
| Room nights | '000 | Mar qtr 2000 | 3 388.1 | -1.0 | 5.4 | 10 088.1 | -3.1 | 5.2 |
| Room occupancy rate | % | Mar qtr 2000 | 60.3 | -1.0 | -0.5 | 58.2 | -2.5 | 0.2 |
| Takings | \$'000 | Mar qtr 2000 | 397 869 | -0.7 | 10.3 | 1 088 603 | -2.1 | 8.5 |

(a) Licensed hotels with facilities, motels and guest houses and serviced apartments with 15 or more rooms or units.

Source: *Tourist Accommodation, Australia (Cat. no. 8635.0)*.

15 ACCOMMODATION ESTABLISHMENTS(a) SYDNEY AND NSW—ORIGINAL

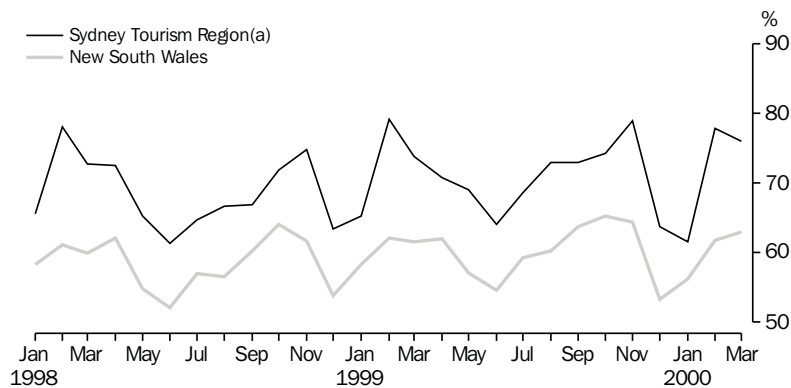
| | Sydney Tourism Region(b) | | | New South Wales | | |
|----------------|--------------------------|---------------------|---------|-----------------|---------------------|---------|
| | Room nights | Room occupancy rate | Takings | Room nights | Room occupancy rate | Takings |
| | '000 | % | \$'000 | '000 | % | \$'000 |
| 1998 | | | | | | |
| December qtr | 1 777.0 | 70.0 | 246 125 | 3 210.5 | 59.8 | 359 172 |
| 1999 | | | | | | |
| March qtr | 1 828.8 | 72.5 | 248 997 | 3 213.2 | 60.6 | 360 674 |
| June qtr | 1 731.3 | 68.0 | 226 273 | 3 099.9 | 57.9 | 332 669 |
| September qtr | 1 865.9 | 71.6 | 247 543 | 3 345.0 | 61.1 | 375 014 |
| December qtr | 1 962.5 | 72.3 | 276 165 | 3 423.1 | 60.9 | 395 165 |
| 2000 | | | | | | |
| March qtr 2000 | 1 980.0 | 71.7 | 279 374 | 3 388.1 | 60.3 | 397 869 |

(a) Licensed hotels with facilities, motels and guest houses and serviced apartments with 15 or more rooms or units.

(b) Excludes Gosford, Wyong and Blue Mountains Statistical Local Areas.

Source: *Tourist Accommodation, Small Area Data, New South Wales (Cat. no. 8635.1.40.001)*.

16 ACCOMMODATION ESTABLISHMENTS, MONTHLY ROOM OCCUPANCY RATE—ORIGINAL



(a) Excludes Gosford, Wyong and Blue Mountains Statistical Local Areas.

Source: *Tourist Accommodation, Small Area Data, NSW (Prod. no. 8635.1.40.001)*.

17 CONSUMER AND PRODUCER PRICE INDEXES—NSW AND AUSTRALIA

| | Unit | New South Wales(a) | | | | Australia(b) | | |
|--|----------------|--------------------|---------------|--------------------------|------------------------------------|---------------|--------------------------|------------------------------------|
| | | Latest period | Latest figure | Change from prior period | Change from same period prior year | Latest figure | Change from prior period | Change from same period prior year |
| | | | | % | % | | % | % |
| Consumer Price Index (all groups) | 1989–90 =100.0 | Jun qtr 2000 | 127.0 | 1.0 | 3.3 | 126.2 | 0.8 | 3.2 |
| Price index of materials used in house building (all groups) | 1989–90 =100.0 | Jun qtr 2000 | 131.2 | 2.5 | 7.7 | 125.5 | 1.4 | 5.3 |
| Price index of materials used in building other than house building (all groups) | 1989–90 =100.0 | Jun qtr 2000 | 117.3 | 0.8 | 1.6 | 117.4 | 0.9 | 1.7 |

(a) Refers to State capital city—Sydney.

(b) For the Consumer Price Index this is the weighted average of eight capital cities and for the other two indexes, the weighted average of the six State capital cities.

Source: Consumer Price Index, Australia (Cat. no. 6401.0); Price Index of Materials Used in Building Other Than House Building, Six State Capital Cities (Cat. no. 6407.0); Price Index of Materials Used in House Building, Six State Capital Cities (Cat. no. 6408.0).

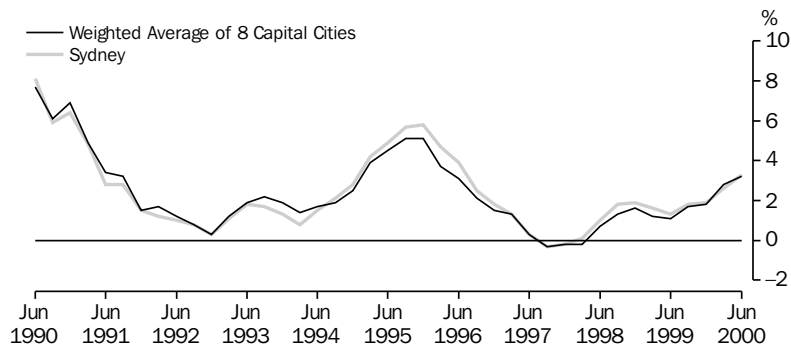
18 CONSUMER AND PRODUCER PRICE INDEXES—NSW(a)

| | Consumer Price Index, all groups | Price Index of materials used in house building, all groups | Price Index of materials used in building other than house building, all groups |
|---------------|-------------------------------------|---|---|
| | 1989–90 = 100.0 | 1989–90 = 100.0 | 1989–90 = 100.0 |
| 1999 | | | |
| March qtr | 122.6 | 122.0 | 115.2 |
| June qtr | 123.0 | 121.8 | 115.4 |
| September qtr | 124.1 | 123.7 | 115.1 |
| December qtr | 124.7 | 124.4 | 115.3 |
| 2000 | | | |
| March qtr | 125.8 | 128.0 | 116.4 |
| June qtr | 127.0 | 131.2 | 117.3 |

(a) Refers to State capital city—Sydney.

Source: Consumer Price Index, Australia (Cat. no. 6401.0); Price Index of Materials Used in Building Other Than House Building, Six State Capital Cities (Cat. no. 6407.0); Price Index of Materials Used in House Building, Six State Capital Cities (Cat. no. 6408.0).

19 CONSUMER PRICE INDEX, ANNUAL RATE OF CHANGE



Source: Consumer Price Index, Australia (Cat. no. 6401.0).

20 SECURED HOUSING FINANCE COMMITMENTS TO INDIVIDUALS FOR OWNER OCCUPATION—NSW AND AUSTRALIA

| | Latest period | New South Wales | | | Australia | | |
|---|---------------|-----------------|--------------------------|------------------------------------|---------------|--------------------------|------------------------------------|
| | | Latest figure | Change from prior period | Change from same period prior year | Latest figure | Change from prior period | Change from same period prior year |
| | | | | | | | |
| Lending commitments for the construction or purchase of dwellings | | | | | | | |
| Construction of dwellings | May 2000 | 257 | 20.7 | -7.1 | 828 | 24.6 | -5.5 |
| Purchase of newly erected dwellings | May 2000 | 100 | 29.4 | 4.3 | 247 | 33.3 | 5.2 |
| Purchase of established dwellings(a) | May 2000 | 1 953 | 23.5 | 9.3 | 4 466 | 27.0 | 12.4 |
| Refinancing of existing dwellings | May 2000 | 506 | 41.3 | 38.9 | 1 246 | 41.1 | 42.7 |
| Lending commitments for alterations and additions | May 2000 | 121 | 28.8 | 10.4 | 314 | 40.6 | 13.9 |
| Total lending commitments to individuals for housing(b) | May 2000 | 2 816 | 26.3 | 11.6 | 6 788 | 29.3 | 14.0 |
| Total lending commitments to individuals for housing (seasonally adjusted)(b) | May 2000 | 2 466 | 2.5 | 3.3 | 6 174 | 4.9 | 6.0 |

(a) Excludes refinancing.

(b) Excludes alterations and additions.

Source: *Housing Finance for Owner Occupation, Australia (Cat. no. 5609.0)*.

21 SECURED HOUSING FINANCE COMMITMENTS TO INDIVIDUALS FOR OWNER OCCUPATION—NSW

| | Lending commitments for the construction or purchase of dwellings | | | | | Total lending commitments to individuals for housing(b) | |
|----------------|---|-------------------------------------|--------------------------------------|-----------------------------------|---|---|---------------------|
| | Construction of dwellings | Purchase of newly erected dwellings | Purchase of established dwellings(a) | Refinancing of existing dwellings | Lending commitments for alterations and additions | Original | Seasonally adjusted |
| | | | | | | | |
| 1996-97 | 2 117 | 1 234 | 12 566 | 4 062 | 1 221 | 19 979 | .. |
| 1997-98 | 2 625 | 1 280 | 14 445 | 3 573 | 1 174 | 21 923 | .. |
| 1998-99 | 2 990 | 1 147 | 16 761 | 4 026 | 1 126 | 24 925 | .. |
| 1999 | | | | | | | |
| March | 341 | 106 | 1 741 | 407 | 126 | 2 595 | 2 214 |
| April | 242 | 79 | 1 600 | 333 | 97 | 2 255 | 2 271 |
| May | 276 | 96 | 1 787 | 364 | 110 | 2 524 | 2 387 |
| June | 300 | 116 | 1 851 | 418 | 105 | 2 686 | 2 476 |
| July | 271 | 96 | 1 786 | 335 | 93 | 2 489 | 2 410 |
| August | 286 | 90 | 1 800 | 396 | 96 | 2 572 | 2 525 |
| September | 315 | 101 | 1 841 | 394 | 106 | 2 652 | 2 524 |
| October | 290 | 104 | 1 956 | 418 | 110 | 2 768 | 2 993 |
| November | 329 | 115 | 2 122 | 460 | 120 | 3 026 | 2 889 |
| December | 275 | 90 | 1 893 | 415 | 105 | 2 672 | 2 792 |
| 2000 | | | | | | | |
| January | 226 | 70 | 1 404 | 309 | 83 | 2 010 | 2 712 |
| February | 324 | 103 | 1 759 | 423 | 114 | 2 609 | 2 709 |
| March | 296 | 101 | 1 956 | 488 | 123 | 2 842 | 2 428 |
| April | 213 | 78 | 1 581 | 358 | 94 | 2 229 | 2 407 |
| May | 257 | 100 | 1 953 | 506 | 121 | 2 816 | 2 466 |

(a) Excludes refinancing.

(b) Excludes alterations and additions.

Source: *Housing Finance for Owner Occupation, Australia (Cat. no. 5609.0)*.

| | Preliminary Actual | | Estimates | |
|---|--------------------|---------------|---------------|---------------|
| | 1998-99 | 1999-2000 | 1998-99 | 1999-2000 |
| | \$m | \$m | \$m | \$m |
| <i>July-April</i> | | | | |
| Current receipts | | | | |
| Stamp duties | 3 947 | 3 747 | 3 251 | 3 743 |
| Payroll tax | 3 617 | 3 637 | 2 984 | 3 127 |
| Land tax | 958 | 859 | 671 | 639 |
| Motor vehicle taxes | 1 055 | 977 | 856 | 811 |
| Gaming and betting | 1 419 | 1 558 | 1 161 | 1 308 |
| Commonwealth safety net taxes | 1 975 | 1 989 | 1 657 | 1 757 |
| Other taxes | 1 251 | 1 245 | 953 | 943 |
| Commonwealth general purpose grants | 4 687 | 5 162 | 3 902 | 4 313 |
| Commonwealth specific purpose grants | 3 464 | 3 449 | 2 885 | 2 849 |
| Dividends/tax equivalents | 1 280 | 1 173 | 1 120 | 953 |
| Other current receipts | 1 316 | 1 256 | 1 044 | 1 073 |
| <i>Total current receipts</i> | <i>24 969</i> | <i>25 052</i> | <i>20 484</i> | <i>21 516</i> |
| Current payments | | | | |
| Interest payments | 1 393 | 1 124 | 977 | 801 |
| Superannuation | 1 499 | 1 640 | 1 224 | 1 366 |
| Subsidies to non-budget sector | | | | |
| Redundancies | n.a. | 86 | 68 | 60 |
| Services | n.a. | 840 | 927 | 611 |
| Total | 990 | 926 | 995 | 671 |
| Departmental payments | | | | |
| Redundancies | n.a. | 98 | 52 | 74 |
| Health | n.a. | 5 949 | 4 835 | 4 998 |
| Education | n.a. | 5 440 | 4 313 | 4 564 |
| Law and order(a) | n.a. | 1 862 | 1 499 | 1 556 |
| Community services | n.a. | 1 253 | 1 056 | 1 100 |
| Other | n.a. | 6 105 | 4 634 | 5 046 |
| Total | 20 406 | 20 707 | 16 389 | 17 338 |
| Treasurer's advances(b) | .. | 160 | .. | .. |
| Less User charges | -2 092 | -2 110 | -1 700 | -1 808 |
| <i>Total current outlays</i> | <i>22 196</i> | <i>22 447</i> | <i>17 885</i> | <i>18 368</i> |
| Current result surplus/deficit (-) | 2 773 | 2 605 | 2 599 | 3 148 |
| Capital receipts— | | | | |
| Commonwealth specific purpose grants | 831 | 784 | 612 | 602 |
| Other capital receipts | 437 | 151 | 371 | 56 |
| <i>Total capital receipts</i> | <i>1 268</i> | <i>935</i> | <i>983</i> | <i>658</i> |
| Capital outlays— | | | | |
| Gross fixed capital payments | 2 946 | 2 798 | 2 312 | 1 915 |
| Capital grants | 1 102 | 1 104 | 931 | 809 |
| Less Asset sales | -597 | -576 | -431 | -288 |
| <i>Total capital outlays</i> | <i>3 451</i> | <i>3 326</i> | <i>2 812</i> | <i>2 436</i> |
| Capital result surplus/deficit (-) | -2 183 | -2 391 | -1 829 | -1 778 |
| Government Finance Statistics result surplus/deficit (-) | 590 | 214 | 770 | 1 370 |

(a) Includes Attorney Generals Department, Department of Corrective Services and Police Services.

(b) Expenditure from the Treasurer's Advance is included in the relevant current payments figures.

Source: Financial Statement released by NSW Treasury. Figures may differ from data published in annual ABS publications.

23 ACTUAL PRIVATE NEW FIXED CAPITAL EXPENDITURE, CURRENT PRICES, NSW AND AUSTRALIA—TREND

| Type of asset | Latest period | New South Wales | | | Australia | | |
|--------------------------------|---------------------|-----------------|--------------------------|------------------------------------|---------------|--------------------------|------------------------------------|
| | | Latest figure | Change from prior period | Change from same period prior year | Latest figure | Change from prior period | Change from same period prior year |
| | | \$m | % | % | \$m | % | % |
| New buildings and structures | Mar qtr 2000 | 1 000 | 4.4 | -2.5 | 2 974 | -2.5 | -11.9 |
| Equipment, plant and machinery | Mar qtr 2000 | 2 855 | 7.0 | 10.3 | 7 751 | 10.3 | 0.3 |
| Total | Mar qtr 2000 | 3 855 | 6.3 | 6.6 | 10 725 | 2.0 | -3.4 |

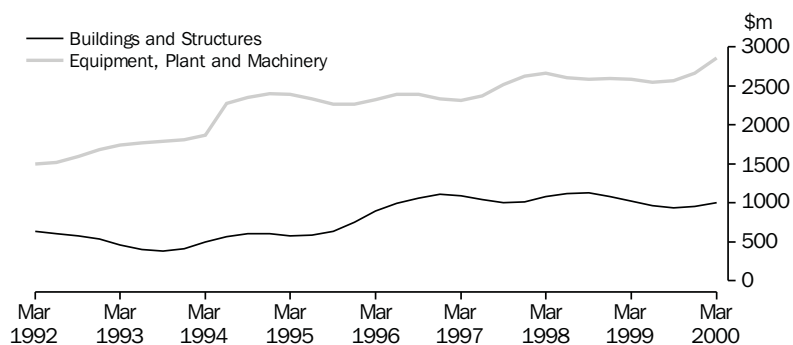
Source: State Estimates of Private New Capital Expenditure (Cat. no. 5646.0).

24 ACTUAL PRIVATE NEW FIXED CAPITAL EXPENDITURE, CURRENT PRICES, NSW—TREND

| | Type of asset | | Total |
|---------------|------------------------------|--------------------------------|-------|
| | New buildings and structures | Equipment, plant and machinery | |
| | \$m | \$m | \$m |
| 1998 | | | |
| December qtr | 1 085 | 2 590 | 3 675 |
| 1999 | | | |
| March qtr | 1 026 | 2 589 | 3 615 |
| June qtr | 960 | 2 551 | 3 511 |
| September qtr | 938 | 2 570 | 3 508 |
| December qtr | 958 | 2 667 | 3 625 |
| 2000 | | | |
| March qtr | 1 000 | 2 858 | 3 855 |

Source: State Estimates of New Capital Expenditure (Cat. no. 5646.0).

25 ACTUAL PRIVATE NEW FIXED CAPITAL EXPENDITURE, CURRENT PRICES, NSW—TREND



Source: State Estimates of New Capital Expenditure (Cat. no. 5646.0).

26 INTERNATIONAL TRADE, IMPORTS(a) AND EXPORTS(b)—NSW AND AUSTRALIA

| | Latest period | New South Wales | | | Australia | | |
|---|---------------|-----------------|--------------------------|------------------------------------|---------------|--------------------------|------------------------------------|
| | | Latest figure | Change from prior period | Change from same period prior year | Latest figure | Change from prior period | Change from same period prior year |
| | | \$m | % | % | \$m | % | % |
| Overseas imports into NSW | May 2000 | 4 614 | 32.0 | 28.1 | 10 369 | 30.2 | 33.9 |
| Total overseas exports(c) | May 2000 | 1 746 | 8.4 | 15.8 | 8 650 | 9.6 | 31.0 |
| Export commodities and SITC(d) code | | | | | | | |
| Meat and meat preparations (01) | May 2000 | 92 | 5.2 | 22.1 | 428 | 51.6 | 27.3 |
| Cereals and cereal preparations (04) | May 2000 | 119 | 26.7 | 50.3 | 433 | 1.5 | 30.9 |
| Wool and other animal hair (268) | May 2000 | 65 | 9.3 | 14.1 | 256 | 8.4 | 19.4 |
| Coal, coke and briquettes (32) | May 2000 | 295 | 3.3 | 4.2 | 761 | 5.7 | 6.7 |
| Iron and steel (67) | May 2000 | 108 | 9.4 | 4.4 | 148 | -3.6 | -14.0 |
| Aluminium (684) | May 2000 | 123 | 14.0 | 32.9 | 354 | 6.1 | 41.2 |
| Office machines and automatic data processing machines (75) | May 2000 | 33 | -13.0 | -22.3 | 52 | -5.3 | -20.4 |

(a) Figures shown are Customs value.

(b) Figures shown are Free On Board (FOB) values.

(c) Excludes re-exported goods.

(d) Standard International Trade Classification Revision 3.

Source: ABS unpublished data, International Trade database.

27 INTERNATIONAL TRADE, IMPORTS(a) AND EXPORTS(b)—NSW

| | Overseas exports of SITC(c) commodities | | | | | | | | |
|----------------|---|---------------------------|---------------------------------|--------------------------------------|----------------------------------|--------------------------------|---------------------|-----------------|---|
| | Overseas imports into NSW | Total overseas exports(d) | Meat and meat preparations (01) | Cereals and cereal preparations (04) | Wool and other animal hair (268) | Coal, coke and briquettes (32) | Iron and steel (67) | Aluminium (684) | Office machines and automatic data processing machines (75) |
| | \$m | \$m | \$m | \$m | \$m | \$m | \$m | \$m | \$m |
| 1997-98 | 38 481 | 19 678 | 923 | 1 588 | 1 061 | 4 048 | 1 167 | 1 224 | 522 |
| 1998-99 | 42 142 | 17 975 | 948 | 1 231 | 685 | 3 766 | 958 | 1 151 | 360 |
| 1999 | | | | | | | | | |
| March | 3 760 | 1 490 | 91 | 112 | 55 | 305 | 83 | 107 | 29 |
| April | 3 386 | 1 290 | 74 | 110 | 41 | 234 | 56 | 79 | 30 |
| May | 3 603 | 1 508 | 75 | 79 | 57 | 283 | 103 | 93 | 42 |
| June | 3 594 | 1 452 | 76 | 110 | 46 | 260 | 59 | 95 | 33 |
| July | 3 497 | 1 517 | 83 | 105 | 54 | 298 | 45 | 104 | 35 |
| August | 3 806 | 1 540 | 85 | 106 | 50 | 278 | 48 | 96 | 38 |
| September | 4 098 | 1 574 | 81 | 94 | 69 | 249 | 59 | 107 | 31 |
| October | 3 765 | 1 556 | 91 | 103 | 78 | 239 | 53 | 105 | 31 |
| November | 4 272 | 1 580 | 90 | 107 | 93 | 244 | 67 | 104 | 37 |
| December | 3 977 | 1 579 | 94 | 112 | 83 | 211 | 68 | 112 | 31 |
| 2000 | | | | | | | | | |
| January | 3 462 | r 1 334 | 68 | 68 | 55 | 261 | 50 | 101 | 24 |
| February | 3 737 | r 1 517 | 86 | 114 | 72 | 226 | r 61 | 122 | 34 |
| March | 4 349 | r 1 639 | r 95 | r 123 | 78 | 238 | 79 | 132 | 45 |
| April | 3 495 | r 1 611 | r 87 | r 94 | r 60 | 286 | r 98 | r 108 | r 38 |
| May | 4 614 | 1 746 | 92 | 119 | 65 | 295 | 108 | 123 | 33 |

(a) Figures shown are Customs value.

(b) Figures shown are Free On Board (FOB) values.

(c) Standard International Trade Classification Revision 3.

(d) Excludes re-exported goods.

Source: ABS unpublished data, International Trade database.

FOR MORE INFORMATION...

- INTERNET* **www.abs.gov.au** the ABS web site is the best place to start for access to summary data from our latest publications, information about the ABS, advice about upcoming releases, our catalogue, and Australia Now—a statistical profile.
- LIBRARY* A range of ABS publications is available from public and tertiary libraries Australia-wide. Contact your nearest library to determine whether it has the ABS statistics you require, or visit our web site for a list of libraries.
- CPI INFOLINE* For current and historical Consumer Price Index data, call 1902 981 074 (call cost 77c per minute).
- DIAL-A-STATISTIC* For the latest figures for National Accounts, Balance of Payments, Labour Force, Average Weekly Earnings, Estimated Resident Population and the Consumer Price Index call 1900 986 400 (call cost 77c per minute).

INFORMATION SERVICE

Data which have been published and can be provided within five minutes are free of charge. Our information consultants can also help you to access the full range of ABS information—ABS user-pays services can be tailored to your needs, time frame and budget. Publications may be purchased. Specialists are on hand to help you with analytical or methodological advice.

- PHONE* **1300 135 070**
- EMAIL* **client.services@abs.gov.au**
- FAX* 1300 135 211
- POST* Client Services, ABS, GPO Box 796, Sydney 1041

WHY NOT SUBSCRIBE?

ABS subscription services provide regular, convenient and prompt deliveries of ABS publications and products as they are released. Email delivery of monthly and quarterly publications is available.

- PHONE* 1300 366 323
- EMAIL* subscriptions@abs.gov.au
- FAX* 03 9615 7848
- POST* Subscription Services, ABS, GPO Box 2796Y, Melbourne 3001



2130710008008
ISSN 1031-8534

RRP \$17.50